



# Inclined moving walk for smooth People Flow®

KONE TravelMaster™ 115

[www.kone.ae](http://www.kone.ae)

Dedicated to  
People Flow™



# Smooth People Flow for everyday environments

With over 110 years of experience and a strong track record in safety, KONE is your trusted partner, dedicated to ensuring smooth and safe People Flow. KONE escalators and autowalks use our proven, reliable technology designed to meet the wide ranging needs of different buildings worldwide.

The KONE TravelMaster™ 115 inclined moving walk is designed for use in commercial buildings. These can include large grocery stores, department stores, shopping malls and exhibition centers. It is also suitable for airports and railway stations. It complies with all relevant international and local safety codes.

- 01 Industry-leading reliability and quality
- 02 Differentiate with a redefined user experience
- 03 Safety = peace of mind
- 04 Reduced environmental impact
- 05 Plan for success with KONE as your partner
- 06 Flexibility to match your building requirements



## Key specifications



Vertical rise  
up to 7 meters



Real inclination  
10° or 12°



Pallet width up to  
1000mm



Speed  
0.5 m/s

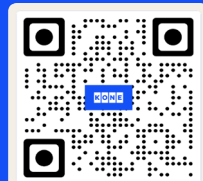


ISO 25745-3 Energy  
performance class  
up to A+++



Digital  
experience

Read more about  
KONE Escalator DX



SCAN ME

[www.kone.ae](http://www.kone.ae)



# Industry-leading reliability and quality

All KONE solutions follow strict quality standards which are dedicated to provide efficient and smooth People Flow experience.

We pay special attention to ensure that the quality and durability of the selected components match the environment and People Flow requirements, minimizing any unplanned downtime.

## **KONE has been a leader in delivering reliable, safe People Flow for more than 110 years**

- Tens of thousands of installations all around the world
- Reliability and safety guaranteed under even the most demanding operating conditions

## **Optimized material selection for quality and reliability:**

- Proven technology on component level
- Usage of wear resistant materials
- Optional permanent monitoring of escalator

## **Certified supply chain**

- Suppliers are required to comply with international standards
- All of our production operations are certified according to the ISO 14001 standard.



## **KONE Kunshan escalator factory**

KONE Kunshan escalator LEED gold certified factory is the largest escalator production base in the world, covering an area of 29,000 square meters. Around 95% of the KONE escalators supplied globally are from the Kunshan factory.

## **The most comprehensive escalator performance test in the industry**

The KONE factory is the first and only factory in the industry to test every escalator produced, for noise, vibration, speed detection, and energy consumption rates – ensuring consistent quality, passenger safety, and excellent ride comfort.



# Differentiate with a redefined user experience

Enhance your escalator in a way that suits you. KONE DX Escalators lets you mix and match features and services, so you can tailor your escalator to what matters most. Transform how people move around your building with next-generation safety and wayfinding tools, and add a little magic to everyday moments. Let's move into the future together.



## KONE Escalator Video Monitoring

AI-assisted video monitoring delivers custom insights tailored to your needs, improving performance, optimizing flow, and intelligently identifying risks.



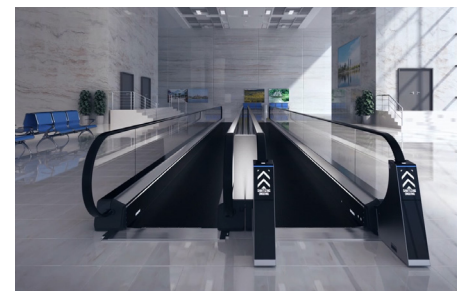
## KONE Escalator Media Screen

Create memorable journeys with media screens that inform, guide and delight passengers while boosting revenue with advertising and branding opportunities.



## KONE 24/7 Connected Services

KONE 24/7 Connected Services is a discreet/intelligent way to increase uptime thanks to predictive maintenance and instant alerts that keep people moving around your building smoothly—today and tomorrow.



## KONE Handrail Sanitizer Premium

Encourage safer behavior with visible handrail sanitization, designed to protect passengers against viruses, bacteria and dirt, and make holding on worry-free.



# Light the way

Deliver intuitive experiences for wayfinding and accessibility with lighting for handrails and skirting—and delight passengers with themes for special occasions.

## KONE Design Lighting

Add a little magic to everyday moments with journeys that inform, guide and delight—from themed lighting to illuminating wayfinding experiences and media screens.





# Safety = peace of mind

All KONE moving walks are equipped with the necessary safety features as required by applicable codes and standards.

Furthermore, should you require solutions to address specific safety concerns related to your People Flow, our sales team will be pleased to offer a selection of optional features tailored to your needs, such as:

- Traffic signalization, skirt lighting, yellow comb segment, step demarcations provide extra visual guidance for passengers to help them to have a smoother and safer ride
- Audible alarms increase clear guidance on moving walk travel direction and improve passengers' attention
- Halogen-free cables
- Provisions for seismic locations
- Extended monitoring options with KONE 24/7 Connected Services and KONE Escalator Video Monitoring

For a complete list of standard and optional safety features please contact your local KONE sales representative.





# Safety = peace of mind



## Extra visual guidance

Traffic signalization, skirt lighting, yellow comb segment, step demarcations provide extra visual guidance for passengers to help them to have a smoother and safer ride.



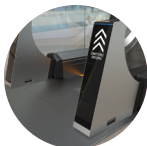
## Audible alarms

provide clear guidance on escalator travel directions and enlarge users attention.



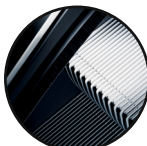
## Fire safety

maximised with halogen-free cables and fire fighting provisions.



## KONE Handrail Sanitizer Premium

continuously reduces bacteria, viruses and dirt from the handrails and encourages users to hold the handrail



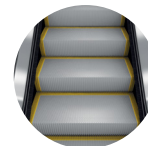
## KONE skirt switch solution

reduces the risk of entrapment



## KONE 24/7 Connected Services

helps you to see the status of the escalator in real time to ensure safe operation.



## Anti slip requirement

Anti-slip grade step surface reduces the chance of passengers slipping.



## Video monitoring

improves operational performance and safety by automatically detecting pre-defined user behaviours.



# Reduced environmental impact

KONE has always been a leader in energy saving and innovative technology in the industry, and enjoys a world-wide reputation. All our escalators and moving walks have achieved A+++ energy performance certificates based on the ISO Standard 25745-3.

## Make your moving walk more eco-efficient

- 01 Sustainable drive options**  
minimize energy consumption.
- 02 Long-lasting LED lighting**  
is up to 80% more efficient than fluorescent lighting and lasts up to 10 times longer.
- 03 Eco-efficient operational modes**  
save energy by slowing down or stopping the escalator completely when traffic is low. For example, when an escalator is empty, energy consumption is further reduced with KONE's smart star-delta operational mode, which regulates the current needed for different types of load situations.





# Moving walk sustainability

At KONE, we want to contribute to better urban living by helping people move around in and between buildings, in ways that are smooth and safe. A great deal of that is about sustainable practices.

## Green building certifications

Installing an eco-efficient KONE TravelMaster™ 115 can help achieve green building accreditations such as LEED or BREEAM certifications. For more information, contact your sales representative.

## Eco-efficient escalator

KONE TravelMaster™ 115 has achieved A+++ energy performance certificate based on ISO standard.



BREEAM®



## EcoVadis Gold medals

KONE holds the EcoVadis Gold medal for its sustainability performance, being in the top 5% of all the assessed companies. The EcoVadis rating covers a broad range of non-financial management systems including environmental, labor and human rights, ethics, and sustainable procurement impacts.



## CDP's A list

KONE has been recognized by CDP for its actions towards reducing emissions, mitigating climate risks, and developing a low-carbon economy. KONE achieved a place on CDP's prestigious A List signifying that we rank among a small number of high performers.



## Forbes 2024 World's Best Employers list

KONE has been recognized as one of the best employers in the world by Forbes business magazine on their Forbes 2024 World's Best Employers list.





# Plan for success with KONE as your partner

Choose a partner with over a century of experience in delivering pioneering People Flow™. Get expert advice from professionals and enjoy the peace of mind that comes with comprehensive support. KONE is with you every step of the way – from planning and design, through installation and maintenance, to modernization – for the entire life cycle of your building.

## Expert design and planning services

- Expert planning advice helps you specify the optimal solution for your building.
- Renowned engineering and design capabilities at your service can create tailor-made solutions to exactly meet your specifications.
- Easy-to-use online design tools save your time and effort during design process.
- Energy consumption calculations available for every individual escalator solution.
- Escalator lifecycle cost calculations available for budget planning.

## Safe and efficient installation

- Highly efficient installation methods result in considerable time savings and minimize disruption to other construction work.
- Strict quality criteria for each installation phase ensures the right fit every time.
- Continuous training, site audits, safety passports, certified Project Management, and proven methods ensure maximum site safety and on-time delivery.
- Eco-efficient installation processes minimize waste and maximize recycling.

## Quality assurance, modernization and professional maintenance

- KONE's own reliability laboratory tests and approves every component used in our escalator solutions.
- Modernization extends the equipment lifetime, and the recycling, reuse, and refurbishment of specific components and materials contribute to the circular economy. then put the point of global spare parts center and then last the one of preventive care.
- Preventive KONE Care® maintenance solutions and a comprehensive online service-reporting system make it easier to monitor and budget for escalator maintenance.
- Our global spare parts center stocks over 150,000 parts and offers 24-hour delivery for the most commonly requested parts.



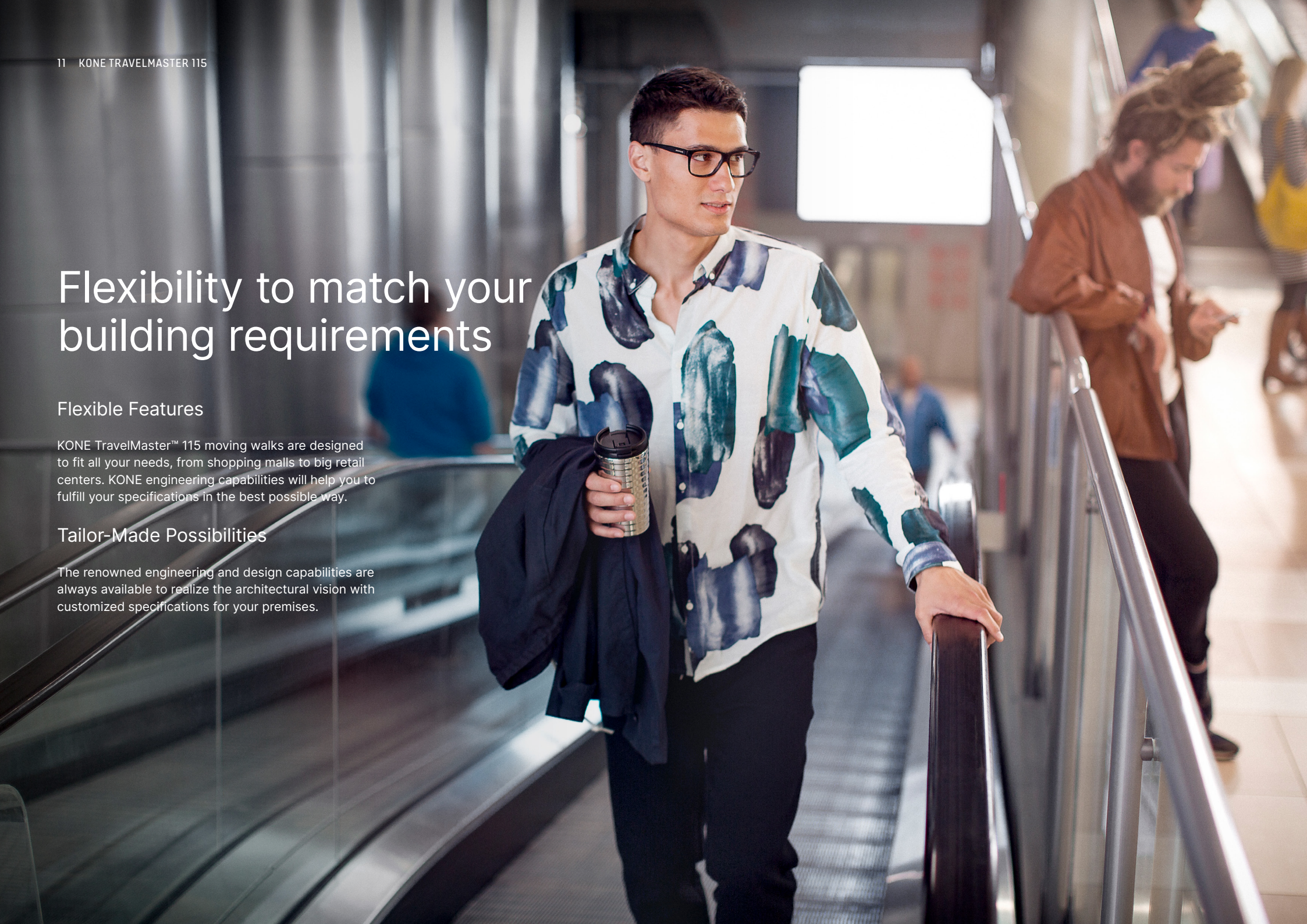
# Flexibility to match your building requirements

## Flexible Features

KONE TravelMaster™ 115 moving walks are designed to fit all your needs, from shopping malls to big retail centers. KONE engineering capabilities will help you to fulfill your specifications in the best possible way.

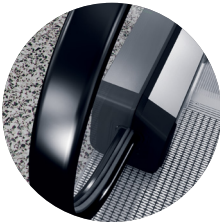
## Tailor-Made Possibilities

The renowned engineering and design capabilities are always available to realize the architectural vision with customized specifications for your premises.

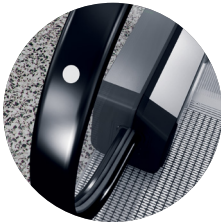




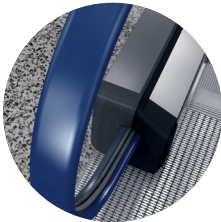
Handrails



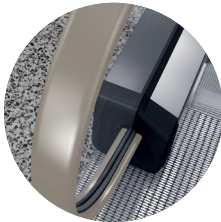
Black



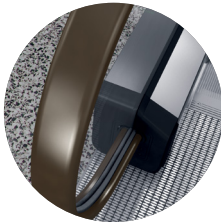
Black with white dots



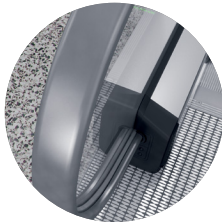
Blue



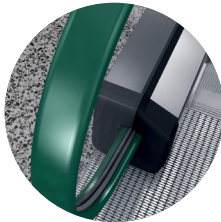
Beige



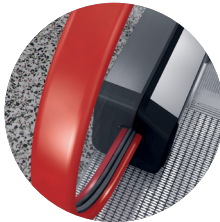
Brown



Gray

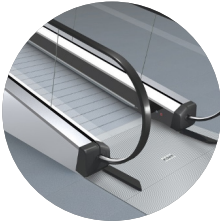


Green

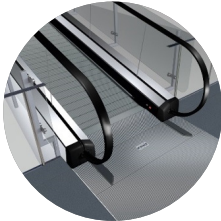


Red

Balustrade

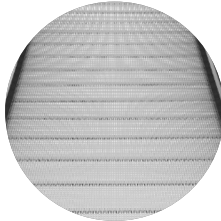


Safety glass 10 mm

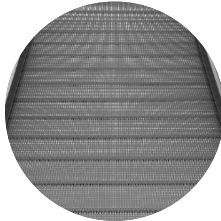


Passenger fall protection barrier

Pallet color

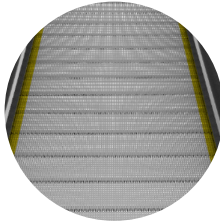


Silver painted aluminum



Black painted aluminum

Pallet demarcation



Yellow painted on 2 sides

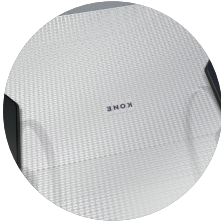
Access covers



Ribbed aluminum natural color



Ribbed aluminum with black grooves

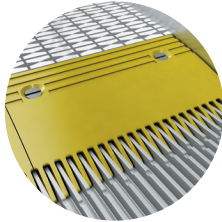


Aluminum frame with no painted stainless steel surface

Comb



Aluminum comb segments



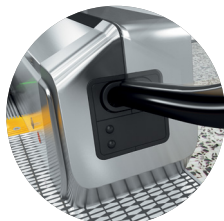
Aluminum with yellow powder coating



## Front plate

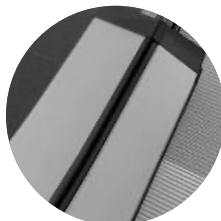


Black plastic



Stainless steel

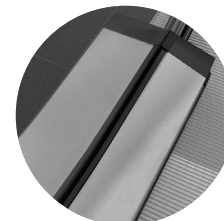
## Decking



Brushed satin stainless steel



Natural anodized aluminum



Powder coating silver (RAL9007)

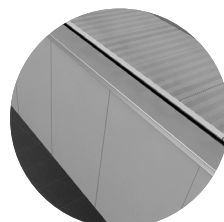
## Cladding



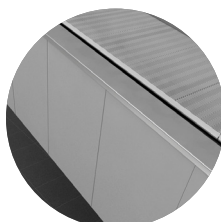
Premium cladding stainless steel or sheet steel with any RAL color



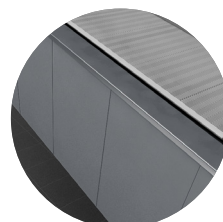
Hairline stainless steel



Painted sheet steel (RAL 7036)



Powder coated sheet steel (RAL 7036)



Powder coated sheet steel (RAL 7024)

## Skirt



Brushed stainless steel skirt with clear anti-friction coating



Sheet steel skirt with black anti-friction coating

## Display

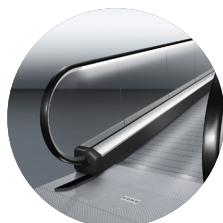


Diagnostic display



## Lighting

### LED handrail lighting

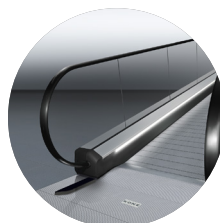


LED Handrail lighting

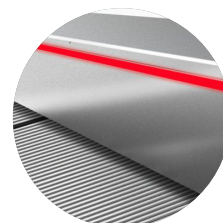


KONE Design Lighting, handrail

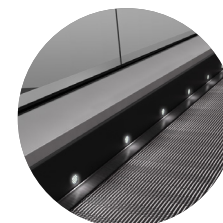
### LED skirt lighting



LED Skirt lighting



KONE Design Lighting, skirt

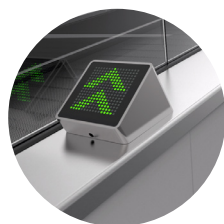


LED Skirt spot lighting

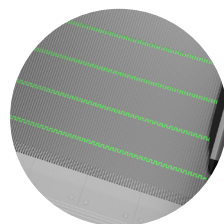
### Additional lighting



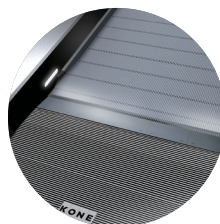
LED traffic light arrow in the decking



LED traffic light cube



Understep lighting green



LED Comb light

## KONE Design Lighting

Hanrail, skirt, or both

### Static colors

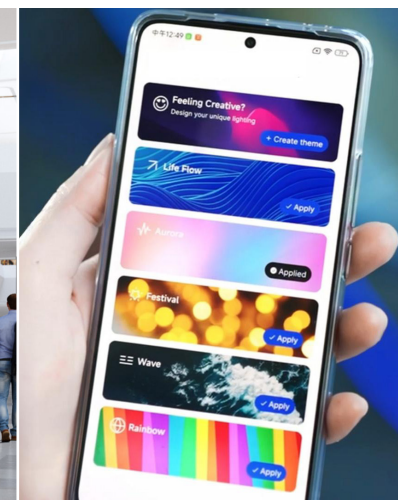
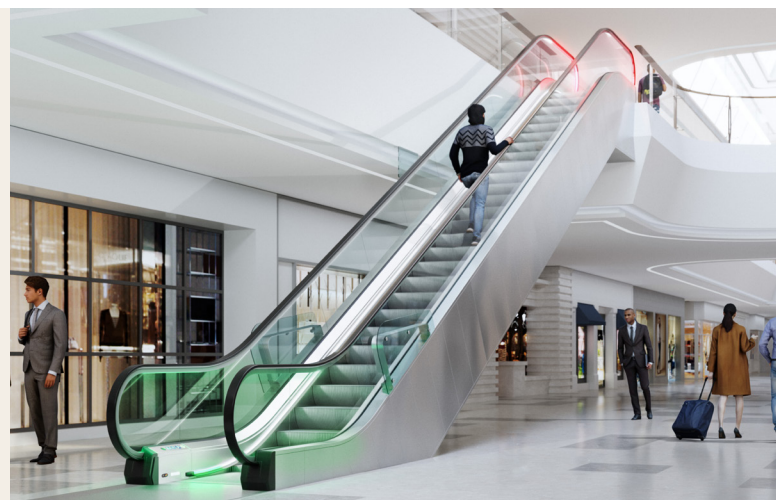
Infinite color spectrum (adjustable) and four color temperatures for white (3000 / 4000 / 5000 / 6000 K)

### 5 pre-defined Themes

LifeFlow / Aurora / Festival / Wave / Rainbow

### Alternatives moods

Whatever you prefer via app



## Change methods of lighting themes

Theme changes through the APP and the key switch in the skirt area. The design lighting connects the escalator electrical system and automatically changes according to the escalator conditions (ex. Running direction)



# Product specification

## Technical information

Applications	Retail, offices, stadiums, railways, exhibition centers, and airports
Environment	Indoor, semi-outdoor
Vertical rise	up to 7 m
Real inclination	10° / 12°
Group Arrangement	Single / Criss Cross / Parallel (2 or 3 units)
Pallet width	800 mm / 1000 mm
Speed	0.5 m/s
Truss deflection	1/750
Drive system type	Chain drive with worm gear
Pallet chain type	Inside Roller 75 × 25 mm
Controller	KONE 501B
Power supply	50Hz / 380V / 220V
	50Hz / 400V / 230V
	50Hz / 415V / 240V
	60Hz / 380V / 110V
Operation mode	60Hz / 220V / 110V
	Smart star-delta
	Standby speed with smart inverter
	Standby speed with smart inverter and/or automatic start/stop

## Design information

Front Plate	Black plastic
	Stainless steel
Balustrade	Safety glass 10 mm
Balustrade height	900 mm / 1000 mm / 1100 mm
Decking	Brushed satin stainless steel
	Powder coating silver
	Natural anodized aluminum
Skirt	Stainless steel
	Sheet steel
Access cover	Ribbed aluminum natural color
	Ribbed aluminum with black grooves
	Aluminum access cover with no painted stainless steel surface (Diamond pattern)
Cladding	Hairline stainless steel
	Powder coated sheet steel (RAL 7036, RAL 7024)
	Painted sheet steel grey (RAL7036)
	Premium cladding stainless steel with any RAL color
	Premium cladding sheet steel with any RAL color
	Fitted by the customer
Pallets	Silver painted aluminum
	Black painted aluminum
	Natural aluminum
Pallet demarcation	Without color demarcation
	Yellow painted demarcation on two sides of pallet (not available for natural aluminum pallet)

Comb segment	Aluminum
	Aluminum with yellow coating
Handrail lighting	LED continuous light - white
	KONE Design Lighting – flexible and modifiable RGBW LED lights for every occasion
Skirt lighting	LED continuous light - white
	LED spot
	KONE Design Lighting – flexible and modifiable RGBW LED lights for every occasion
Comb lighting	LED static light - different colors
	LED flashing light - different colors
Traffic lights	LED arrows
	LED cube
	LED road sign
Understep lighting	LED green light





KONE provides innovative and eco-efficient solutions for elevators, escalators, automatic building doors and the systems that integrate them with today's intelligent buildings. We support our customers every step of the way: from design, manufacturing and installation to maintenance and modernization. KONE is a global leader in managing the smooth flow of people and goods throughout buildings. This makes us a reliable partner throughout the building life cycle. We are fast, flexible, and we have a well-deserved reputation as a technology leader, with such innovations as KONE 24/7 Connected Services and KONE UltraRope®. KONE employs over 60,000 dedicated experts to serve you globally and locally.

## UAE

### Dubai (Regional Office)

KONE Middle East LLC  
U-Bora Tower,  
C/O Al Abraj Str & Al Khaleej Str,  
Business Bay.  
P.O. Box 21474  
Tel: +971 4 279 4500  
[www.kone.ae](http://www.kone.ae)

## Kingdom of Saudi Arabia

### Riyadh (Head Office)

KONE Areeco Ltd  
King Fahad Road,  
Olaya District,  
Al Hamad Tower, Floor 8.  
P.O. Box 10142, Riyadh, 12212  
Tel: +966 9200 17055  
[www.kone.sa](http://www.kone.sa)

## Egypt

KONE LLC  
Plot no.10 B, Mohamed Naguib Axis,  
Fifth Settlement,  
O1 Mall, KONE 2nd Floor, New Cairo.  
P.O. Box 11841  
Tel: 0800 000 9733  
[www.kone.eg](http://www.kone.eg)

## Morocco

KONE Elevators & Escalators SARL  
Lot Marjana N6,  
Sidi Maarouf, Casablanca.  
P.O Box 20280  
Tel: +212 522 580211  
[www.kone.ma](http://www.kone.ma)

## Qatar

KONE Elevators WLL  
Ghanem Office Tower,  
Building No. 54, Street No. 640,  
Zone 23, Salwa Road,  
Bin Mahmoud Area, Doha.  
P.O. Box 37143  
Tel: +974 4488 8835  
[www.kone.qa](http://www.kone.qa)

## Oman

KONE Assarain LLC  
Hatat Complex B, Office 103, 1st Floor,  
Wadi Adai, Ruwi 112, Muscat.  
P.O. Box 1475  
Tel: +968 2465 7000  
[www.kone.om](http://www.kone.om)

## Bahrain

KONE Elevators WLL  
Building 767, Office number 61,  
Road number: 3629,  
Block number: 336,  
Adliya, Kingdom of Bahrain.  
P.O. Box 21303  
Tel: +973 1774 9271  
[www.kone.bh](http://www.kone.bh)

## Kuwait

Laila Tower, 14th floor, office 3,  
Salmiya, Kuwait.  
P.O. Box 21119 - Safat 13072  
Tel: +965 2571 3531  
[www.kone.com.kw](http://www.kone.com.kw)

## Tunisia

KONE Elevators & Escalators SARL  
Ensemble Immobilier Miniar,  
Rue du lac d'Ourima,  
1053 les Berges du Lac  
Bureau B41 au 4ème étage - Bloc A.  
Tunis, Tunisia  
P.O. Box 1053  
Tel: +216 299 80610  
[www.kone.tn](http://www.kone.tn)

## East Africa (Kenya and Uganda)

KONE NAIROBI (Head Office)  
Mercure Hotel Annexe, 13th Floor,  
Longonot Road, Upperhill, Nairobi, Kenya.  
P.O. Box 35174 00100  
Tel: +254 115 848 603  
[www.kone.co.ke](http://www.kone.co.ke)  
[www.kone.ug](http://www.kone.ug)

## South Africa

KONE Elevators South Africa (Pty) Ltd,  
Unit 11, 11B Riley Road,  
Eastwood Office Park,  
Bedfordview Ext. 328, 2007  
P.O. Box 11540  
Tel: +27 11 035 1800  
[www.kone.co.za](http://www.kone.co.za)

## Türkiye

İçerenköy Mah. Değirmenyolu Cad.  
No:28 Asiaofispark B Blok D:3 Kat:2  
P.O. Box 34752 Ataşehir/İstanbul.  
Tel: +90 444 5663  
[www.kone.com.tr](http://www.kone.com.tr)

## Kazakhstan

KONE Kazakhstan LLP  
D.Konayev Street 12/1,  
floor 9, 010017,  
Astana, Kazakhstan.  
P.O. Box Astana 010000  
Tel: +7 702 335 3389/3317  
[www.kone.kz](http://www.kone.kz)

This publication is for general informational purposes only and we reserve the right at any time to alter the product design and specifications. No statement this publication contains shall be construed as a warranty or condition, express or implied, as to any product, its fitness for any particular purpose, merchantability, quality or representation of the terms of any purchase agreement. Minor differences between printed and actual colors may exist. KONE MonoSpace® DX, KONE EcoDisc®, KONE Care® and People Flow® are registered trademarks of KONE Corporation. Copyright © 2024 KONE Corporation.  
[www.kone.ae](http://www.kone.ae)

**Dedicated to  
People Flow™**